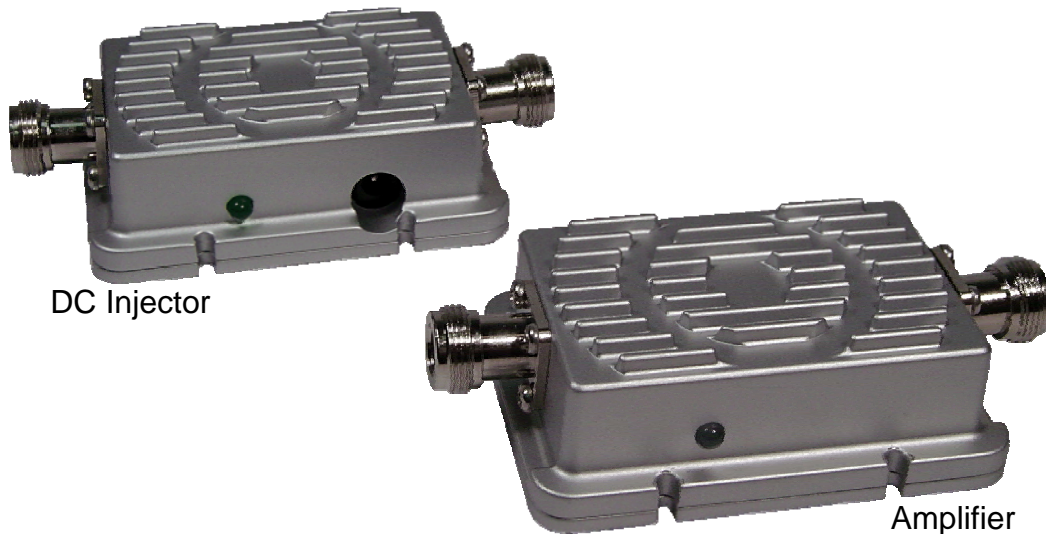


## 2.4GHz IEEE802.11g Bi-Directional Amplifier (For Outdoor Use)

Model : AAM-2410b/g



### Features :

- ◆ Weather proof
- ◆ Tx / Rx LEDs Indication
- ◆ DC power feed through RF cable
- ◆ Easy to mount
- ◆ High switching speed

### Specifications :

Output Power	28 dBm $\pm$ 1dB
Operating Range	2400-2500 MHz
Operating Mode	Bi- Directional TDD
Transmit Gain	up to 12dB
Data Rate	CCK, OFDM
Frequency Response	$\pm$ 1dB
Signal Type	IEEE802.11g
TX Input Power	6dBm Min / 18dBm Max
Receiver Gain	12-15dB, 12dB typical
Noise Figure	3.5dB typical
Connectors	N – Type, 50 Ohm
Lightning Protection	Quarter Wave Technology
Power Consumption	Tx : <1A / Rx : <160mA @ 9 VDC
LED Indication	Transmit : Green / Receive : Red
AMP Dimensions	110L x 60W x 31H (mm)
Operating Temperature	-30°C to +70°C